



Brownsburg Senior Academy

FAQ for Student Rentals and Student Owned Laptops VMView Client – What is it? & Internet, Printing, G:Drive

What is VMView Client? Why do I need to know how to use it?

This is new this year and is what we will use for you to access our school's network. This also replaces what you may know as "Portal". You will use this to access the internet, be able to print, and access your G:drive. You may hear it referred to as VDI, WMWare View Client, or View Client. It was added to your computer during SA Registration.

This program will create a "virtual" desktop on your computer. That means – when you successfully login, to explain simply, it will look just like you are sitting at a computer in any computer lab. If you go to Start → All Programs, you will notice you have all the programs you are used to seeing, even if you do not see a shortcut on your desktop for them; Word, Excel, OneNote, etc.

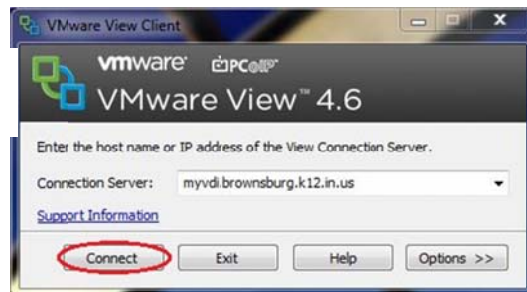
The important thing that you need to remember is – FOR STUDENT RENTALS ONLY:

To access the wireless (aka "Internet") at school, print, and see your G:drive – you **MUST** use the VMware View Client,



How do I login to the VDI Client?

Step 1: Open the Client software (the picture above). Click on "Connect"



Step 2: Enter your username and password. Your username is your Student ID.

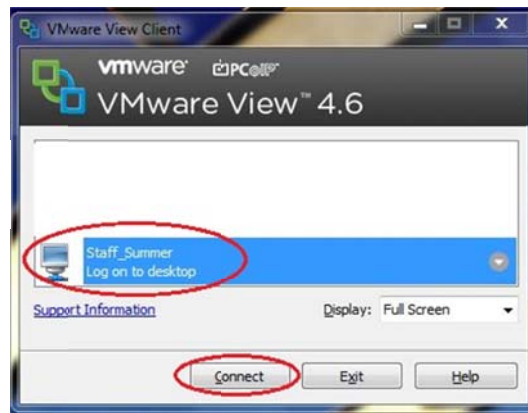
Click 'Login'.





Brownsburg Senior Academy

Step 3: Select 'HS' from the list and click 'Connect'.



Step 4: If you wish to access a thumb drive or other USB device from within the virtual desktop, plug the device into your computer's USB port, and then click 'Connect a USB Device' at the top of your virtual desktop window. Select the USB device from the list.



Step 6: When you are finished with your virtual desktop, click the Windows 'Start' button, and then 'Shut Down'.

How do I save my work onto my G:drive?

The easiest way is to make sure you open your virtual/VDI session first. Do whatever work you need. Save to your G:drive as you are used to doing.

If your files are on your own computer – currently, the easiest way is to use the USB/thumb/flash drive option mentioned above. Or, email it to yourself and then open your email in the VDI session.

NOTE!!! ONLY SAVE YOUR WORK TO YOUR G DRIVE OR APPROPRIATE SHARED DRIVE, NOT THE 'C DRIVE' OR 'MY DOCUMENTS' AREA OF THE VIRTUAL DESKTOP! ANYTHING SAVED TO THE VIRTUAL DESKTOP AREA WILL BE ERASED UPON LOGOFF!!!

If you have any questions, please ask your teachers, administrators, or me. We are glad to help!